

## Network Video Recorder(NVR) Quick Setup Guide

NO.:101-600-0219-01  
Issue:1.0

### Precautions

Fully understand this document before using this device, and strictly observe rules in this document when using this device. If you install this device in public places, provide the tip "You have entered the area of electronic surveillance" in an eye-catching place. Failure to correctly use electrical products may cause fire and severe injuries.

<b>WARNING</b>	It alerts you to moderate dangers which, if not avoided, may cause minor or moderate injuries.
<b>CAUTION</b>	It alerts you about risks. Neglect of these risks may cause device damage, data loss, device performance deterioration, or unpredictable results.
<b>NOTE</b>	It provides additional information.

- WARNING**
  - Strictly observe installation requirements when installing the device. The manufacturer shall not be held responsible for device damage caused by users' non-conformance to these requirements.
- Strictly conform to local electrical safety standards and use power adapters that are marked with the LPS standard when installing and using this device. Otherwise, this device may be damaged.
- Use accessories delivered with this device. The voltage must meet input voltage requirements for this device.
- If this device is installed in places with unsteady voltage, ground this device to discharge high energy such as electrical surges in order to prevent the power supply from burning out.

- When this device is in use, ensure that no water or any liquid flows into the device. If water or liquid unexpectedly flows into the device, immediately power off the device and disconnect all cables (such as power cables and network cables) from this device.

- Do not focus strong light (such as lighted bulbs or sunlight) on this device. Otherwise, the service life of the image sensor may be shortened.
- If this device is installed in places where thunder and lightning frequently occur, ground the device nearby to discharge high energy such as thunder strikes in order to prevent device damage.

#### CAUTION

- Avoid heavy loads, intensive shakes, and soaking to prevent damages during transportation and storage. The warranty does not cover any device damage that is caused during secondary packaging and transportation after the original packaging is taken apart.
- Protect this device from fall-down and intensive strikes, keep the device away from magnetic field interference, and do not install the device in places with shaking surfaces or under shocks.
- Clean the device with a soft dry cloth. For stubborn dirt, dip the cloth into slight neutral cleanser, gently wipe the dirt with the cloth, and then dry the device.
- Do not jam the ventilation opening. Follow the installation instructions provided in this document when installing the device.
- Keep the device away from heat sources such as radiators, electric heaters, or other heat equipment.
- Keep the device away from moist, dusty, extremely hot or cold places, or places with strong electric radiation.
- If the device is installed outdoors, take insect- and moisture-proof measures to avoid circuit board corrosion that can affect monitoring.
- Remove the power plug if the device is idle for a long time.

### Special Announcement

- All complete products sold by the manufacturer are delivered along with nameplates, quick setup guide and accessories after strict inspection. The manufacturer shall not be held responsible for counterfeit products.
- The manufacturer will update this manual according to product function enhancement or changes and regularly update the software and hardware described in this manual. Update information will be added to new versions of this manual without prior notice.
- This manual may contain misprints, technology information that is not accurate enough, or product function and operation description that is slightly inconsistent with the actual product, the final interpretation of company is as a standard.
- This manual is only for reference and does not ensure that the information is totally consistent with the actual product. For consistency, see the actual product.

#### NOTE

For more information, please refer to CD and website.

## 1 Open Package Examination

Open the package, check the appearance of product for no obvious damage, and confirm the item list for table 1-1 is consistent.

Table 1-1 Packing list

Component	Quantity	Remark
Network video recording	1	
Quick Setup Guide	1	
CD-ROM	1	
Mouse	1	
Power adapter	1	
Power cord	1	
Silicone cushion	2	
Phillips head screw	6	

## 2 Device Structure

### 2.1 Device Ports

#### NOTE

Different device may have different ports and multi-head cable, please refer to the actual product.

Front panel description of device please refer to table 2-1.

Table 2-1 Front panel description

Port Name	Description
PWR Indicator	When the NVR is operating, the PWR indicator is steady on. When the NVR is shut down, the PWR indicator is turned off.
HDD Indicator	This indicator flashes when data is transmitted.
PoE Indicator	This indicator flashes when data is transmitted.
KB/MOUSE	Supports connection to an USB mouse and keyboard.

Rear panel description of device, please refer to table 2-2.

Table 2-2 Rear panel description

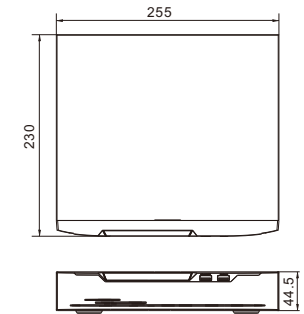
Port Name	Description
PoE	PoE network interfaces
LAN	RJ 45 10/100/1000 Mbps adaptive Ethernet interface
AUDIO OUT/AUDIO IN	Audio output and audio input
VGA	Video output interface
HD-OUT	
Alarm I/O	Alarm input/Alarm output
DC48V	Connected to an external power adapter

### 2.2 Device Dimensions

#### NOTE

Different device may have different dimensions, please refer to the actual product.

Figure 2-1 Dimensions (Unit:mm)



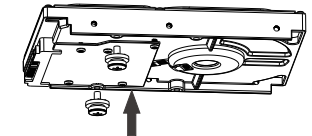
## 3 Device Installation

The hard disk of the NVR must be provided by the user. Take the following steps to install hard disks :

Step 1 Remove the screws for fixing the cover and take down the cover.

Step 2 Take out the screws and silicone cushion, route the screws through the silicone cushion, and install it to the screw holes, as shown in figure 3-1.

Figure 3-1 Installing the hard disk screws



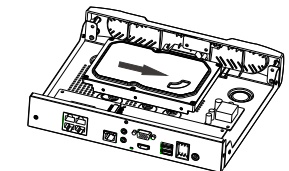
#### NOTE

During the installation, ensure that the large disc of the silicon cushion close to the hard disk screw holes.

Please install the hard disk fixing screws on the screw holes close to the power supply interface.

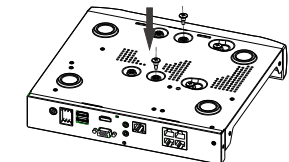
Step 3 Route the screws through the holes on the base, push the hard disk to the appropriate position on the left, as shown in figure 3-2.

Figure 3-2 Installing hard disk



Step 4 Turn the device over, and fasten the rest two hard disk fixing screws, as shown in figure 3-3.

Figure 3-3 Fixing hard disk



Step 5 Install other hard disks following step 2, step 3 and step 4, and insert the hard disk data cable and power cable, then put on the upper cover and fasten the fixing screws.

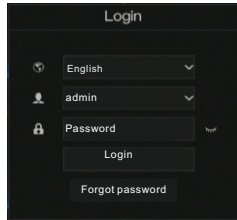
## 4 Device Operation

### 4.1 Startup

Before starting NVR, ensure that the NVR is connected to a power supply properly and a monitor is connected to the HDMI or VGA interface of the NVR correctly. NVR will access the login interface as shown in figure 4-1.

**CAUTION** In some environments, if the power supply is abnormal, the NVR may not work properly. In severe cases, the NVR may be damaged. In these environments, you are advised to use regulated power supply.

Figure 4-1 Login interface



Enter the correct user name and password. The main interface of the NVR is displayed.

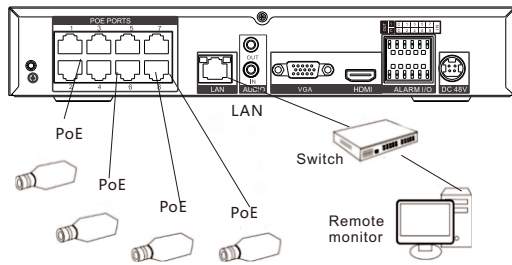
#### NOTE

The default user name is **admin**. The default password is **admin**. For system security, it's forced to change password when you login the system at the first time. You can change the system display language on the login page.

### 4.2 Topology of the NVR

POE NVR support accessing camera immediately, and automatically assign IP address. The topology refer to figure 4-2.

Figure 4-2 Topology of the NVR



### 4.3 Power off

Choosing **Main Menu > System > Maintenance > shutdown** to power off the NVR.

#### NOTE

Before replacing the hard disk, the power supply must be turned off.

## 5 Quick Configuration

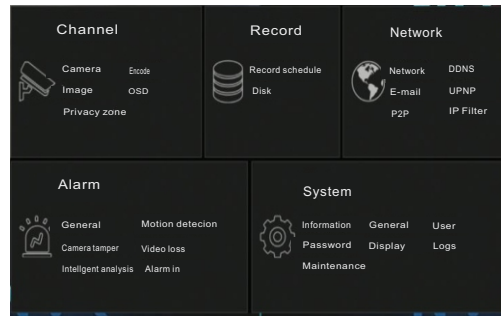
Plug in power to access the NVR user page. Right-click the main interface to display Main Menu. Main Menu comprises Camera, System settings, Log Center and Alarm manager, as shown in figure 5-1.

### 5.1 Channel

Channel comprises Camera, Encode, Image, OSD, Privacy Zone as shown in figure 5-2.

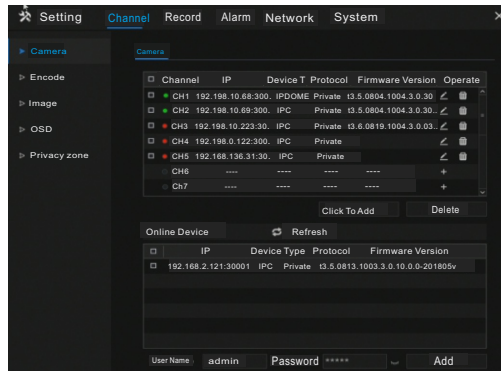
- Camera:** Add or delete cameras to a NVR channels by choosing online device, then click **“Click to Add”** or **“Delete”** add or delete cameras.

Figure 5-1 Main menu



- Encode:** Set channel, stream information, encode type, resolution, frame rate, bit rate control, bit rate.
- Image:** Set image parameters including brightness, contrast, saturation and sharpness. Click **“Copy”** to apply the parameter settings to all cameras.
- OSD:** Custom the time and OSD displayed in the live video page.
- Privacy Zone:** Set privacy zone by drug mouse, double-click an area to delete it. Supports up to 4 zones.

Figure 5-2 Channel



### 5.2 Record

Record comprises Record Schedule and Disk.

- Record Schedule:** Enable record and audio, set schedule.
- Disk:** Show capacity and status of disk

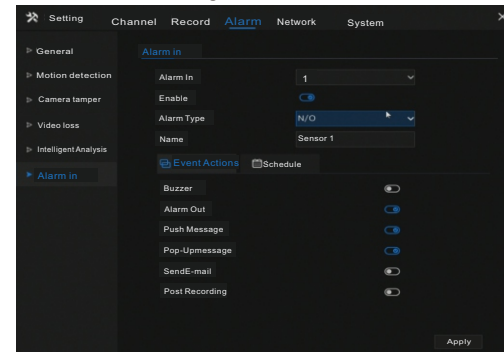
### 5.3 Alarm

Alarm comprises General, Motion detection, Camera tamper, Video loss, Intelligent analysis, Alarm in as shown in figure 5-3.

- General:** Set alarm opening and duration time.
- Motion Detection:** Set motion detection parameter, event actions like buzzer, alarm out, push message, Pop-up message, send E-mail.
- Area:** Press left button and drag the cursor to select a detection area, and then double-click an area to delete it.
- Schedule:** Set enable time about motion detection alarm.
- Camera Tamper:** Choose channel and enable, set camera tamper parameter.
- Video Loss:** Set video loss alarm
- Intelligent Analysis:** Refer to motion detection setting.

- Alarm In:** Set alarm in channel(1-16). Alarm type, Name, Event actions and Schedule setting can refer to Motion detection setting.

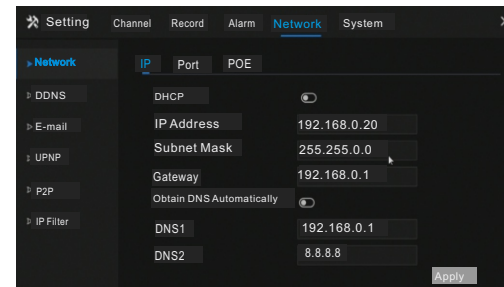
Figure 5-3 Alarm



### 5.4 Network

Network comprises Network DDNS, E-mail, UPNP, P2P, IP Filter as shown in figure 5-4.

Figure 5-4 Network



- Network:** Configure IP address, port and POE.
- DDNS:** Enable the button to open DDNS. Configure protocol, domain name, user and password, then click **“Test”** and **“Apply”**.
- E-mail:** Set E-mail for receiving alarm messages.
- UPNP:** Set the UPNP information according to network that can visit the NVR online.
- P2P:** Fast connection by client
- IP Filter:** Set black list and white list.

### 5.5 System

System includes Information, General, User, Password, Display, Logs, Maintenance.

- Information:** Show device information (ID, name, type, model), firmware version, HDD volume, channel support, alarm in and out, audio in and out.
- General:** Includes system, date and time, time zone, DST.
- User:** View online user and set advance setting, like auto login, password double authentication, boot wizard
- Password:** Enable and disable the password in the privilege manager setting.
- Display:** View channels mode.
- Logs:** View login and logout information, search and export logs.

- Maintenance:** Includes shutdown, reboot, exit system, reset, import configuration, export configuration.

### 5.6 Live Video

Input the user name and password on the login page, then click Login to access the live video page, as shown in figure 5-5.

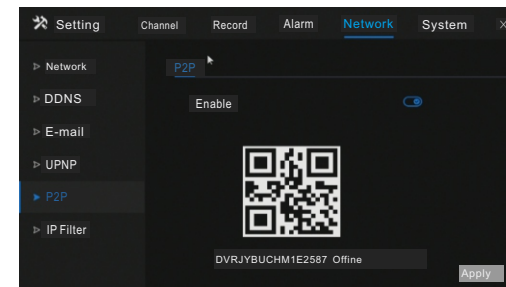
Figure 5-5 Live video



## 6 Mobile Client

Search for **“Inview Pro4”** in APP store or Google Play to download and install the mobile client. Open the client to scan the UUID QR code on back board of the NVR, or choose **Main Menu > Network > P2P** and scan UUID QR code to add the NVR device to the App client.

Figure 6-1 P2P



## 7 Web Accessing

This NVR can be accessed through Web. Open the web browser such as IE, input the device IP address (192.168.0.121 by default) in the address box, and press Enter. The login page is displayed as shown in figure 7-1.

Figure 7-1 Login



#### NOTE

The default user name is **admin**. The default password is **admin**. Change the password when you login the system for first time to ensure system security.